



GAT MONTHLY MEMBERSHIP PROGRESS REPORT

Results as of: 5/31/2023

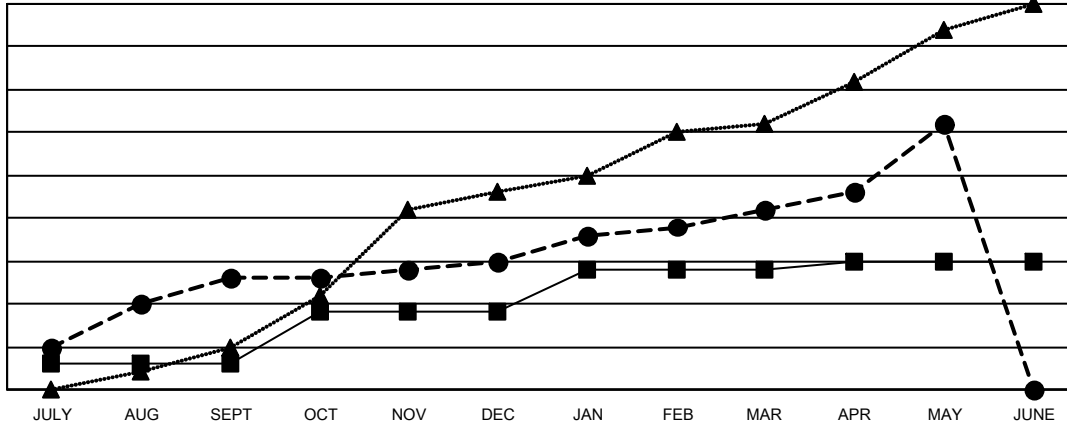
Multiple District 307

LOCATION: INDONESIA

Clubs			
RESULTS FOR 2022-2023			
QUARTER	NEW CLUB GOAL	NEW CLUBS	DROPPED CLUBS
JULY/AUG/SEPT	3	13	3
OCT/NOV/DEC	6	2	6
JAN/FEB/MAR	5	6	2
APR/MAY/JUNE	1	10	1

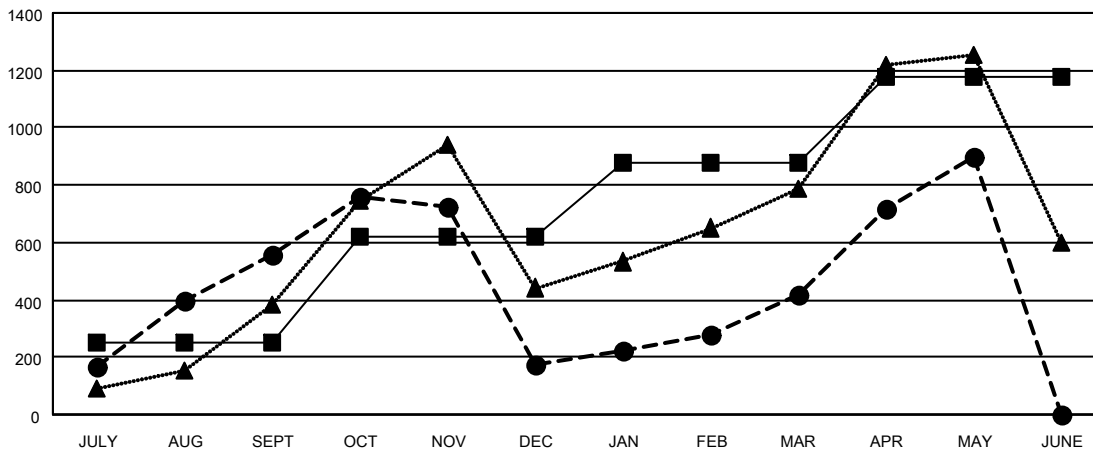
Members			
RESULTS FOR 2022-2023			
QUARTER	MEMBER GROWTH NET GOAL	MEMBER GROWTH ACTUAL	DROPPED MEMBERS ACTUAL (including transfers)
JULY/AUG/SEPT	250	940	195
OCT/NOV/DEC	370	449	817
JAN/FEB/MAR	260	425	156
APR/MAY/JUNE	300	770	268

GOALS AND ACTUAL NEW CLUBS CUMULATIVE



- - CURRENT YEAR GOALS FOR NEW CLUBS
- - CURRENT YEAR ACTUAL NEW CLUBS
- ▲ - LAST YEAR ACTUAL NEW CLUBS

GOALS AND ACTUAL MEMBERS CUMULATIVE



- - MEMBER GROWTH NET GOAL
- - MEMBER GROWTH ACTUAL
- ▲ - LAST YEAR MEMBERSHIP ACTUAL

DROPPED CLUBS: 12	279 CLUBS OF 407 ADDED 1 OR MORE NEW MEMBERS	GENDER DISTRIBUTION
DROPPED MEMBERS	CLICK HERE FOR CUMULATIVE MEMBERSHIP DATA	MALE 5,279 (42.39%)
DECEASED 28		FEMALE 7,167 (57.55%)
CLUB CANCELLED 115		NON BINARY 0 (0.00%)
OTHER 1,295		PREFER NOT TO ANSWER 7 (0.06%)
TOTAL 1,438		TOTAL FAMILY UNIT MEMBERS 3,186
		FAMILY MEMBERS PAYING HALF DUES 1,861